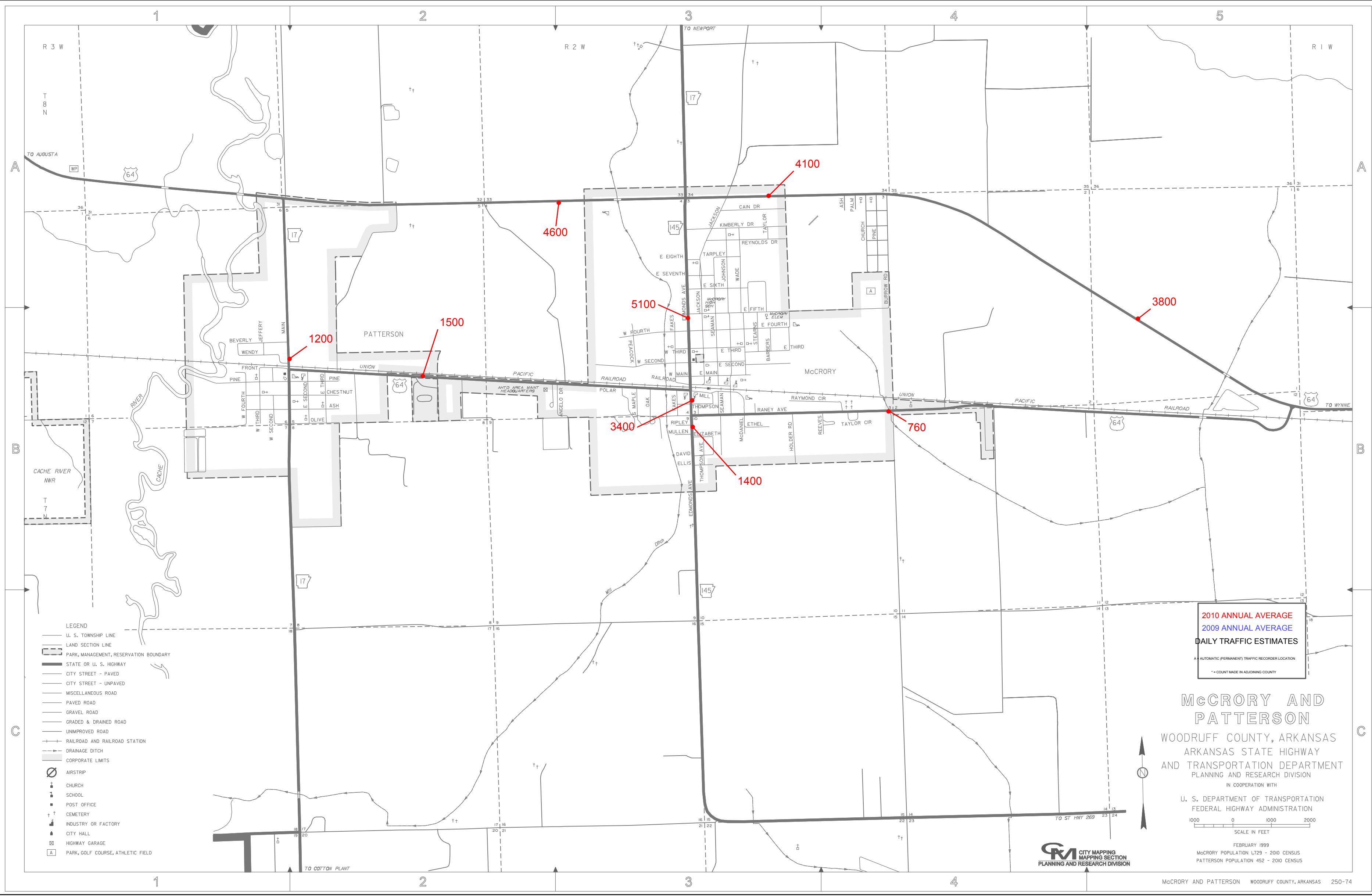


INDEX

- ANGELO DR B-3
- ASH A-4
- BARBERS B-3
- BEVERLY B-1
- BURROW RD A-4
- CAN DR A-3
- CHESTNUT B-2
- CHURCH A-4
- DAVID B-3
- E EIGHTH B-3
- FIFTH B-3
- FOURTH B-3
- MAIN B-3
- SECOND B-2
- SEVENTH A-3
- SIXTH B-3
- THIRD B-2
- E THIRD B-3
- EDMONDS AVE B-3
- EDMONDS AVE B-3
- ELIZABETH B-3
- ELLIS B-3
- ETHEL B-3
- FRONT B-1
- HOLDER RD B-3
- JACKSON A-3
- JEFFERY B-1
- JOHNSON A-3
- KIMBERLY DR A-3
- MAIN B-1
- MICHAEL B-3
- MILL B-3
- MULLEN B-3
- OAK B-3
- OLIVE B-2
- PALM A-4
- PEACOCK B-3
- PINE B-1
- PINE B-1
- PINE B-2
- POLAR B-3
- RAILROAD B-3
- RANEY AVE B-3
- RAYMOND CIR B-4
- REEVES B-3
- REYNOLDS DR B-3
- RIPLEY B-3
- S MAPLE B-3
- SEAMAN B-3
- STEARNS B-3
- TARPLEY B-3
- TAYLOR A-3
- TAYLOR CIR B-3
- THOMPSON B-3
- THOMPSON AVE B-3
- W FOURTH B-3
- W MAIN B-3
- W SECOND B-3
- W THIRD B-1
- W THIRD B-1
- WADE B-3
- WENDY B-1



- LEGEND**
- U. S. TOWNSHIP LINE
 - LAND SECTION LINE
 - PARK, MANAGEMENT, RESERVATION BOUNDARY
 - STATE OR U. S. HIGHWAY
 - CITY STREET - PAVED
 - CITY STREET - UNPAVED
 - MISCELLANEOUS ROAD
 - PAVED ROAD
 - GRAVEL ROAD
 - GRADED & DRAINED ROAD
 - UNIMPROVED ROAD
 - RAILROAD AND RAILROAD STATION
 - DRAINAGE DITCH
 - CORPORATE LIMITS
 - AIRSTRIIP
 - CHURCH
 - SCHOOL
 - POST OFFICE
 - CEMETERY
 - INDUSTRY OR FACTORY
 - CITY HALL
 - HIGHWAY GARAGE
 - PARK, GOLF COURSE, ATHLETIC FIELD

2010 ANNUAL AVERAGE
2009 ANNUAL AVERAGE
DAILY TRAFFIC ESTIMATES

A AUTOMATIC PERMANENT TRAFFIC RECORDER LOCATION
 * COUNTY MADE IN ADJACENT COUNTY

McCRORY AND PATTERSON
 WOODRUFF COUNTY, ARKANSAS
 ARKANSAS STATE HIGHWAY
 AND TRANSPORTATION DEPARTMENT
 PLANNING AND RESEARCH DIVISION

IN COOPERATION WITH
 U. S. DEPARTMENT OF TRANSPORTATION
 FEDERAL HIGHWAY ADMINISTRATION

FEBRUARY 1999
 McCRORY POPULATION 1,729 - 2010 CENSUS
 PATTERSON POPULATION 452 - 2010 CENSUS

CITY MAPPING
 MAPPING SECTION
 PLANNING AND RESEARCH DIVISION